

WARNING

Welding fume is classified as a carcinogen, which means that it has the potential to cause

CANCER



The Dangers Of Welding Fume

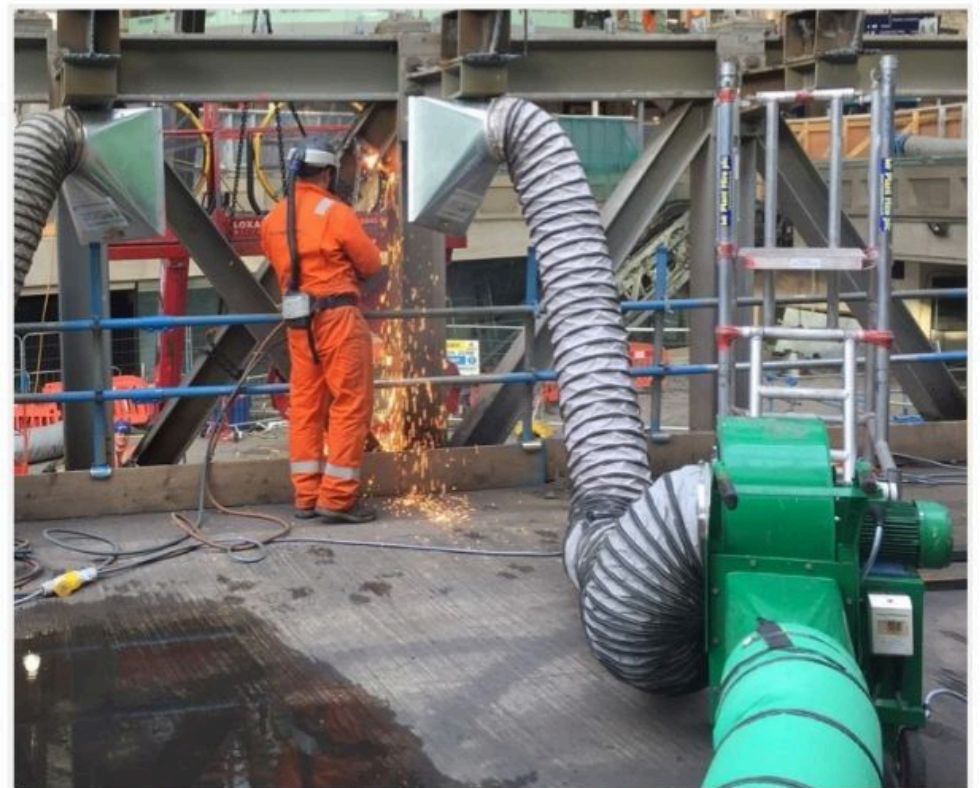
- Research shows that exposure to welding fume can cause lung cancer and possibly kidney cancer.

- Other potential health risks from inhaling welding fumes include irritation of throat and lungs, metal fume fever, asthma and anaemia.

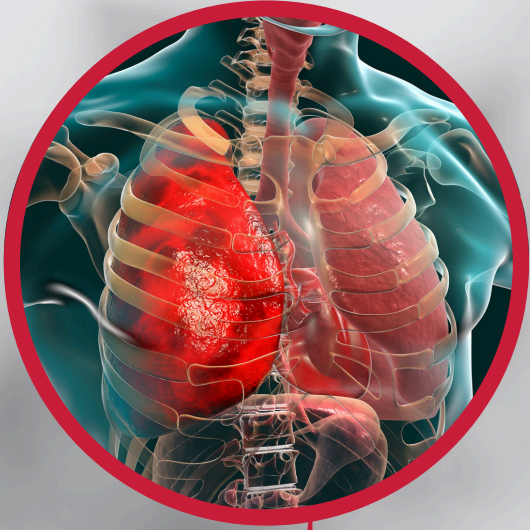
- Control measures CAN and SHOULD be put in place to protect workers from harmful welding fumes.

- Safe Work Australia advises 'workers must not be exposed to levels of total welding fumes greater than 1 mg/m³ over an eight-hour working day, based on a five-day working week.'

Our customised engineering controls protect workers' health. Contact us today.



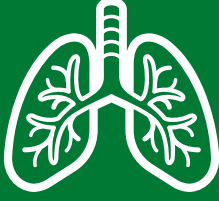
Ravex® Burning Fume Filtration Kit



"It is estimated that each year

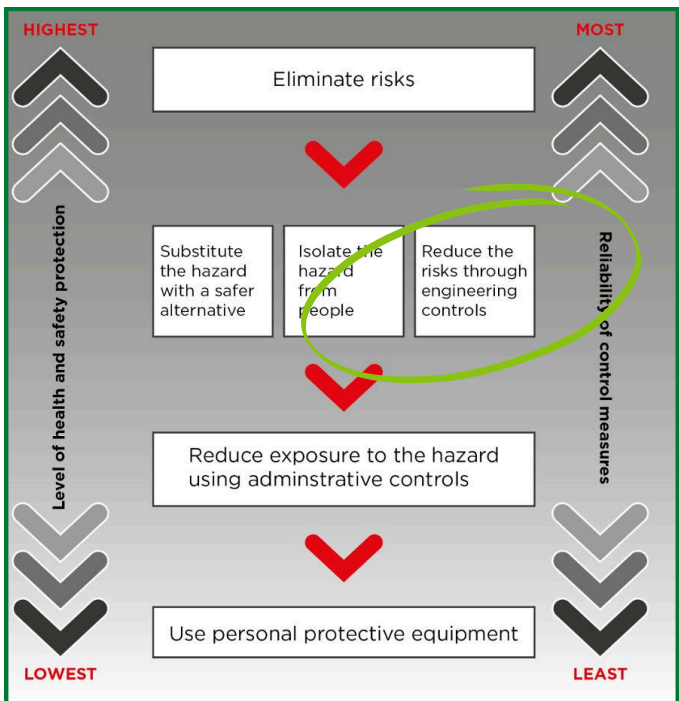
230

people develop lung cancer due to past exposure to silica dust at work."
- The Cancer Council.



Silica Dust. *The new Asbestos?*

- Silica is found in many construction materials, however the dust particles are so small, you can barely see them.
- Inhaling silica dust can cause inflammation of the lungs and lead to the condition 'silicosis'.
- Silicosis potential complications include tuberculosis, lung cancer, chronic bronchitis, autoimmune disorders and kidney disease.
- Silicosis symptoms include a persistent cough, shortness of breath, and tiredness.



Safe Work Australia's Hierarchy of Control Measures show engineering controls as the second most reliable level of protection against workplace hazards - like silica dust.

PPE isn't enough.

Take action by calling us today.



8,000
times is how often you inhale at work each day. If you're working with dust, that's 8,000 opportunities to put yourself at risk of developing Occupational Lung Disease.

Construction Dust MUST Be Suppressed

Why control dust?



Damage to health: Breathing in dust particles can cause Occupational Lung Diseases such as silicosis and lung cancer.



Environmental pollution: Excessive dust can cause damage to surrounding property, wildlife habitats and water courses.



Project delays and fines: complaints to council and WH&S have the power to shut down sites.



Reputation damage: project delays, prosecution, fines and PR scandals, will not go down well with the client!

Why misting works:



The spray of water dampens surfaces to prevent airborne dust being generated.



If dust is already airborne, the mist will intercept any airborne dust particles and pull them to the ground.



Odours can be reduced with the help of neutralising agents in the water tank.

Contact RVT for a customised dust suppression solution!